



**MANISA**

---

**Mv Manisa Sofia**

**Imo number:** 9428396  
**Flag:** Portugal  
**Ice class:** Finnish/ Swedish 1A  
**Built:** 2011

Fitted for carriage of dangerous goods of all IMO classes  
Fitted for trading Australia and Great Lakes

**General Dimensions:**

Length over all: 136,64 m  
Breadth moulded: 18,90 mt  
Height hold as SID: 11,75 m  
Height lower hold as TWD: 3,19 or 6,35 or 8,85 m \*  
Height tween deck as TWD: 7,85 or 4,70 or 2,20 m \*

\* Except where side tanks in hold 1+3 where lowest position not available

Summer draft: 8,52 m

Gross Tonnage: abt 8.620  
Net Tonnage: abt 4.398

Deadweight all told: Abt. 12.500 mt excl. TWD  
Abt. 12.075 mt incl. TWD

**Capacity**

Grain / Bale: 556.980 cbft / 15.772 m<sup>3</sup>

**Floor space:**

Tank Top: 1.270 m<sup>2</sup>  
Tween deck: 1.419 m<sup>2</sup>  
Weather deck: 1.589 m<sup>2</sup>

**Air Changes (basis empty holds)**

Hold 1: Abt. 30 x p/h  
Dehumidifier: Yes

**Container Intake**

Total: 658 TEU – Intake always subject stability

**Hatches:**

**Weather deck:** No.1: 26,60 x 15,80 m  
No.2: 31,74 x 15,80 m  
No.3: 26,60 x 15,80 m  
Steel, end folding type

**Tween deck:** No.1: 28,00 x 15,80 m  
No. 2: 61,84 x 15,80 m  
17 steel pontoons

Bulkheads/compartments: Removable pontoons for up to 11 compartments at TEU interval

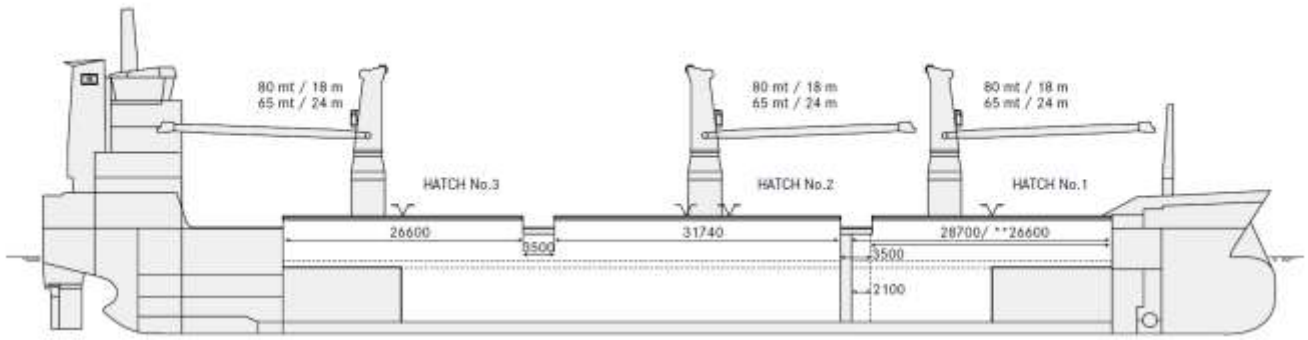
**Maximum Load**

Weather deck hatch covers: 2,00 t/m<sup>2</sup>  
Tweendeck hatch covers: 4,50 t/m<sup>2</sup>  
Tank top: 20,00 t/m<sup>2</sup>

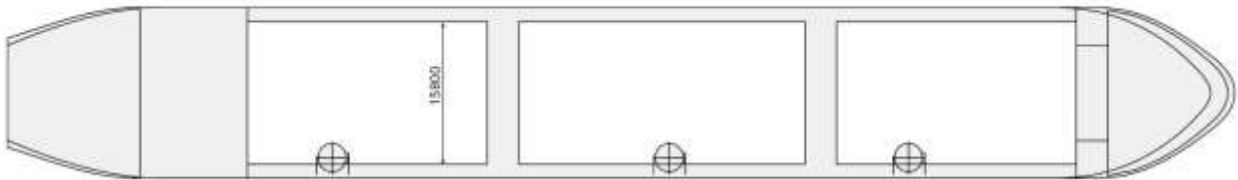
**Deck Cranes**

Position: 3 x situated on starboard side  
Tons /reach: 80 mt SWL/18 m  
65 mt SWL/24 m

*All details are 'about' given in good faith without guarantee*



### WEATHER DECK



### TWEEN DECK



### TANK TOP



### CROSS SECTION

