



MANISA

Mv Manisa Emy

Open hatch, box shaped, double skinned, Single-decker, Ice Class 1B.
Grain / CO2 fitted.

General

IMO number 9421063
Built 2008 ShipyardNanjing Huatai Shipyard Co., Ltd.
Classification Bureau Veritas

Class notations: Multi-Purpose Dry Cargo Vessel, "G" strengthened for heavy cargoes, SOLAS II-2, Reg 19 BWM-S +MC E1 Aut equipped for carriage of containers.

Ice class 1B
Port of registry Delfzijl
Flag Dutch
P and I Club North of England P&I

Main particulars

DWAT 8.101 mt
Length over all 108,18 m
Breadth over all 18,20 m
Drafts Summer 7,010 m, Tropical / 7,156 m / Winter 6,864 m

TPC SSW 17,80 mt/cm
Dept (moulded) 9,00 m

GT 5.598
NT 2.883

Cargo Capacities

Total cubic feet capacity 364.665 cbft grain/bale

Hold #1 95.844 cbft grain/bale
Hold #2 137.837 cbft grain/bale
Hold #3 130.984 cbft grain/bale

Holds/Hatches

3 Holds/ 3 Hatches, all types are: fully open hatch. Box shaped and double skinned.

Holds Dimensions

H1: 17,50 x 15,20 x 11,40

H2: 25,20 x 15,20 x 9,20

H3: 25,90 x 15,20 x 9,20

Electrical ventilation:

About 6 air changes per hour basis empty hold. Holds are fitted with dehumidifier system.

Bulkheads

Vessel is not fitted with bulkheads.

Strenghts:

Max pressure tanktop 15,00 mts/sqm

Max pressure weatherdeck 2,20 mts/sqm (hatch no. 1)

3,50 mts/sqm (hatch no. 2 and 3)

Including 8 heavy load points for pointloads upto 60 mts/sqm.

Max pressure weatherdeck:

#1: 2,20 mts/sqm

#2: 3,50 mts/sqm

#3: 3,50 mts/sqm

Including 8 heavy load points for pointloads upto 60 mts/sqm.

Strenghts:

Max pressure tanktop 15,00 mts/sqm

Max pressure weatherdeck Hatch no. 1: 2,20 mts/sqm Hatch no. 2&3 3,50 mts/sqm

Including 8 heavy load points for pointloads upto 60 mts/sqm

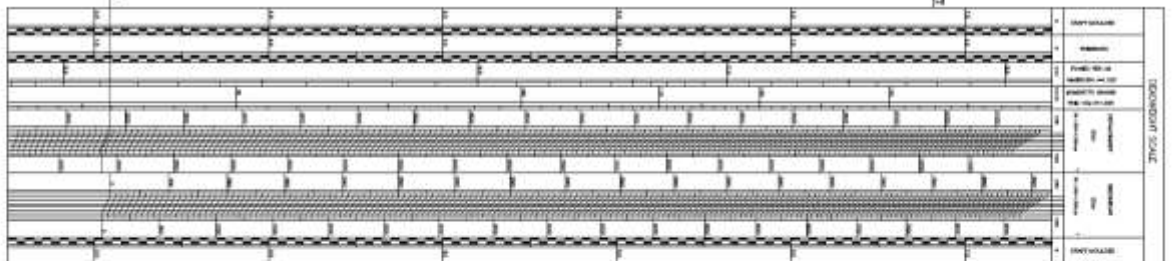
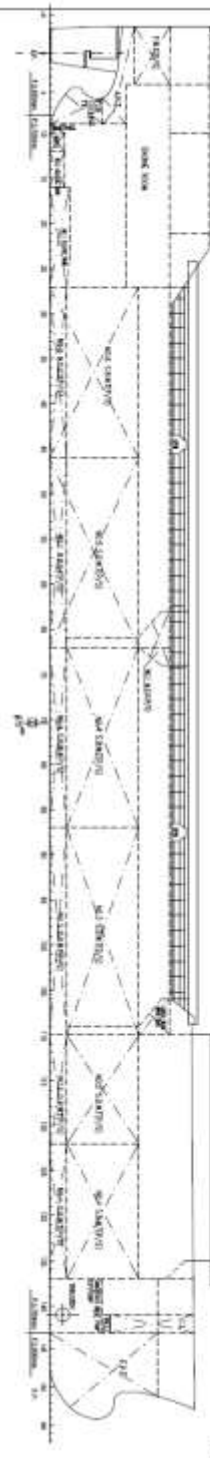
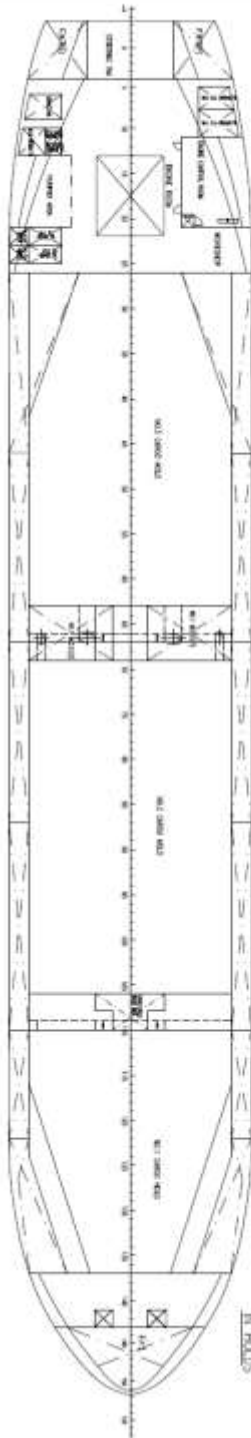
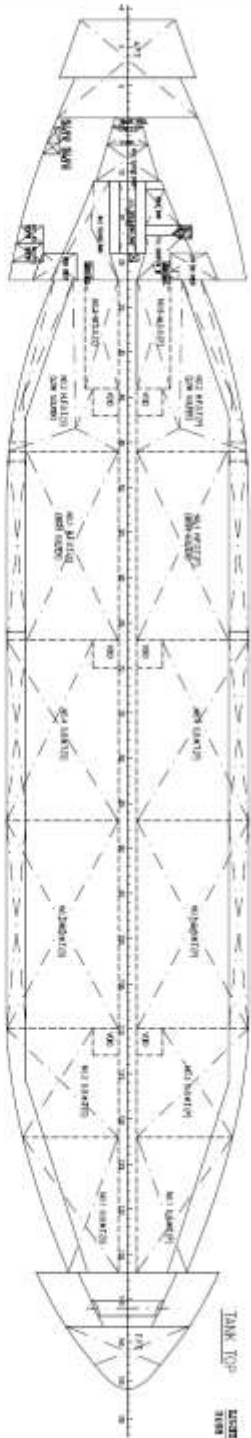
Engines

Main Engine: MAK 6M32 C, 3.000 kW

Propeller: Left-hand CCP

Bow Thruster: 250 kW

All details are 'about' given in good faith without guarantee



NO.	DESCRIPTION	UNIT	QTY	REMARKS
1	PLATE	mm	1000	
2	STIFFENER	mm	2000	
3	MANHOLE COVER	mm	10	
4	AIR INTAKE	mm	5	
5	INSULATION	mm	1000	
6	STRUCTURAL STEEL	mm	1000	
7	MANHOLE COVER	mm	10	
8	AIR INTAKE	mm	5	
9	INSULATION	mm	1000	
10	STRUCTURAL STEEL	mm	1000	